



FEDERATION EUROPEENNE DE LA MANUTENTION
Product Group
Industrial Trucks

FEM

A brief guide for identification of non-compliant industrial trucks

03.2011 (E)

- Outdoor Noise -

I n d e x

1	Introduction	2
2	Scope	2
3.	General.....	2
4.	Machine marking, Engine power & Guaranteed sound power level	3
4.1	Counterbalanced lift trucks with capacity over 10 ton and Rough terrain trucks.....	3
4.1	Counterbalanced lift trucks with capacity up to and including 10 ton	4

Fédération Européenne de la Manutention (Product Group Industrial Trucks)

A brief guide for identification of non-compliant industrial trucks

1 Introduction

Internal combustion engine driven industrial trucks placed on the EU market for the first time must comply with the relevant EU legislation - and meet all valid safety and environmental requirements. Machinery which does not fulfil these requirements is noncompliant and is not allowed to be placed on the EU market. This guideline is meant to help to easily distinguish between compliant and noncompliant machinery. It describes only those essential criteria which can be checked even without in-depth knowledge and technical information. Thus, this brochure is not meant to be comprehensive but is designed to act as an “early warning” tool. However, if one or more items are out of line with the criteria then it is likely that you have non-compliant equipment. The import of non-compliant industrial trucks into the EU, and its sale and use, remains a major problem for the European industrial trucks industry. It is a source of unfair competition and compromises bona fide suppliers’ ability to fund R&D. This in turn threatens the competitiveness of the European industrial trucks industry and the jobs it provides. Accidents with non-compliant machines are more likely to happen and they often do not meet the environmental standards demanded by the EU. Product Group Industrial Trucks of FEM, as the recognized organization representing and promoting European industrial trucks manufacturers and related industries, calls upon all responsible authorities and stakeholders to work together to rid the EU of non-compliant industrial trucks.

This guide represents so far only one of a series of guides dealing with non compliance of industrial trucks.

2 Scope

This guide deals with the non-compliance of industrial trucks with regards to outdoor noise according to directive 2000/14/EC only. Therefore, only industrial trucks with internal combustion engines are concerned.

3. General

Rough terrain trucks and other counterbalanced lift trucks, (excluded are those counterbalanced lift trucks that are specifically constructed for container handling) must be marked with their guaranteed sound power level according European Directive 2000/14/EC as amended by the Directive 2005/88/EC, and also specified including measurement uncertainty in the operators manual according the Machinery Directive 2006/42/EC.

The maximum guaranteed sound power level depends on the engine power.

- Counterbalanced lift trucks with capacity over 10 ton and Rough terrain trucks are subjected to sound power limits.
- Counterbalanced lift trucks with capacity up to and including 10 ton are subject to declaration marking only.

A brief guide for identification of non-compliant industrial trucks

4. Machine marking, Engine power & Guaranteed sound power level

4.1 Counterbalanced lift trucks with capacity over 10 ton and Rough terrain trucks

On counterbalanced lift trucks with **capacity over 10 ton and Rough terrain trucks**

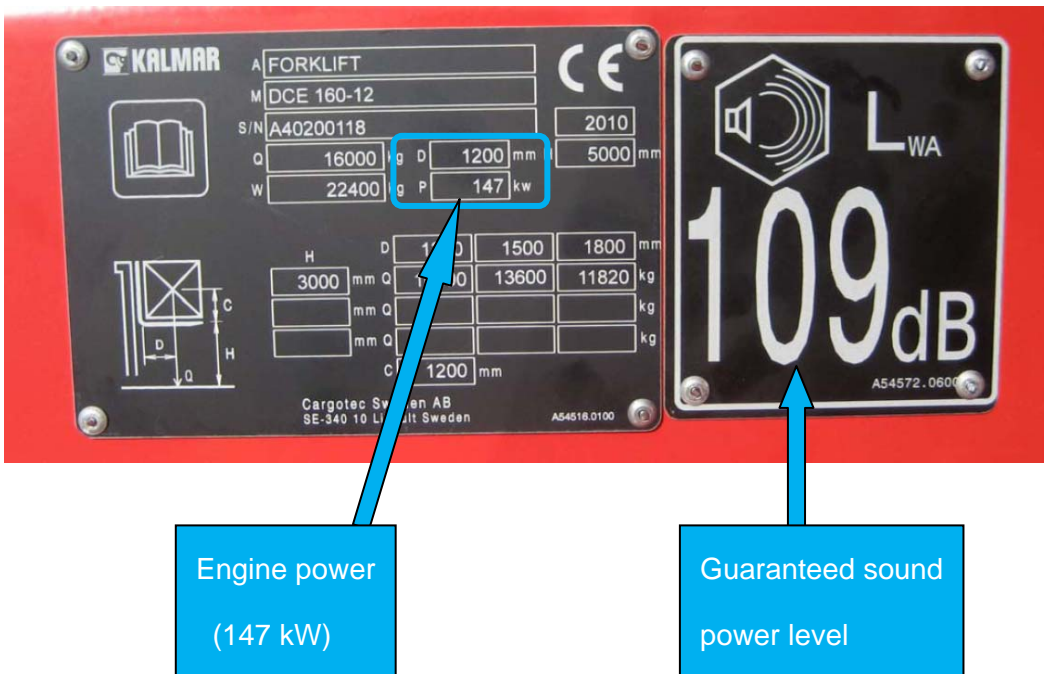
- check the engine power on the machine marking (or marking plate on the engine) and
- check the guaranteed sound power level against the limit given in the table below.

Engine power (kW)		Sound Power limit dB(A)
From	To	
0	55	104
56	73	105
74	90	106
91	111	107
112	136	108
137	168	109
169	208	110
209	256	111
257	316	112
317	389	113
390	480	114

A brief guide for identification of non-compliant industrial trucks

A machine with engine power 147 kW (as below) must have a guaranteed sound power of no more than 109 dB(A).

The example below complies.



4.2 Counterbalanced lift trucks with capacity up to and including 10 ton

Counterbalanced lift trucks with a **capacity up to and including 10 ton** must be marked with their guaranteed sound power level, only. No limits are applicable.

The example below complies.

