



**Harald Fries**

Secretary

International Powered Access Federation

[www.ipaf.org](http://www.ipaf.org)

Tel: +41 (0)61 227 9000

E-mail: [harald.fries@ipaf.org](mailto:harald.fries@ipaf.org)

16<sup>th</sup> May 2017

**Doc. Ref. MPG-MKT-2017-05**

## A brief guide for identification of non-compliant MEWPs

### Contents

1.	Introduction.....	1
2.	Most common items of non-compliance with EU regulations.....	2
3.	Identification of machine and manufacturer.....	3
4.	Documents.....	4
5.	Instructions.....	6
6.	Engine exhaust emission.....	6
7.	Noise Emissions.....	7
8.	Warnings and decals.....	8

### 1. Introduction

Machinery including MEWPs placed on the EU market for the first time must comply with applicable EU legislation regarding safety and environmental requirements.

Machinery which does not fulfil these requirements is deemed to be non-compliant and not permitted to be placed on the EU market<sup>1</sup>. This guide provides basic information to assist with the identification of MEWPs which may not be compliant.

---

<sup>1</sup> See [Blue Guide 2016](#) paragraph 2.3 "*Products made available on the market must comply with the applicable Union harmonisation legislation at the moment of placing on the market*"



The import of non-compliant MEWPs into the EU is a source of unfair competition; some non-compliant MEWPs also undermine the level of safety represented by a compliant machinery, which threatens the competitiveness of the European MEWPs industry and the jobs it provides.

This guide is not a comprehensive document but is designed to highlight a series of simple checks which can be considered to act as an “early warning” tool when inspecting MEWPs. Only criteria which can be checked without in-depth knowledge or additional technical information is provided, however, if one or more items do not satisfy the criteria, it is likely that the respective machine is not compliant.

The FEM MEWP Product Group together with the IPAF Manufacturers’ Technical Committee, as the recognized organizations representing and promoting European MEWPs manufacturers and related industries, call upon all responsible authorities and stakeholders to work together to eliminate non-compliant MEWPs in the EU.

Should a potentially non-compliant MEWP be identified further guidance can be ascertained by contacting the relevant manufacturer directly.

## **2. Most common items of non-compliance with EU regulations**

- Marking
- Documents
- Instructions
- Diesel engine emissions
- Noise emissions
- Warnings/decals

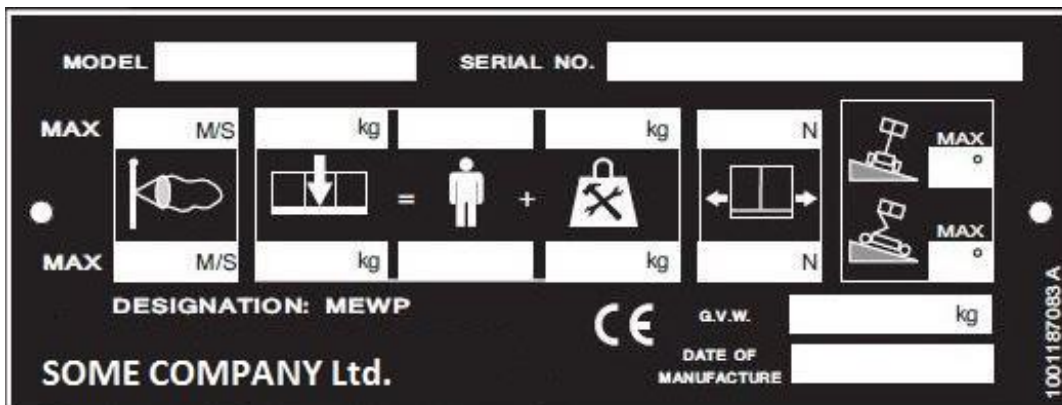


### 3. Identification of machine and manufacturer

All MEWPs placed on the EU market must be clearly and permanently marked with the following information, in one of the official languages of the European Community:

- Name and address of the manufacturer (and their EU representative, if relevant)
- The CE mark
- Model and Designation of the MEWP
- Serial number of the MEWP
- The year of manufacture
- Rated load in kilograms;
- Rated load given as the allowable number of persons and mass of equipment in kilograms;
- Maximum allowable manual force in N;
- Maximum allowable wind speed in m/s;
- Allowable inclination(s) of the chassis;
- Hydraulic supply information if an external hydraulic power supply is used;
- Electrical supply information if an external electric power supply is used.
- The weight of non-loaded MEWP in kg

Examples of a compliant marking:





## 4. Documents

All MEWPs placed on the EU market for the first time must be accompanied by a Declaration of Conformity. The Declaration of Conformity is a critical document which shows the applicable EU directives the machine complies with and if multiple directives are referenced these may be listed separately.

It must be in a community language and include at least the following:

- A statement that the machine meets the requirements of the following EU directives<sup>2</sup>:
    - The Machinery Directive; (i.e. 2006/42/EC, 98/37/EC, )
    - The Directive on Noise Emissions in the Environment by Equipment for Use Outdoors (only for internal combustion powered machines, e.g. 2000/14/EC and its amendments);
    - The Directive on Electromagnetic Compatibility; (Applies to MEWPs with active electronic parts - e.g. 2014/30/EU, 2004/108/EC)
  - The name and address of the manufacturers (and of his EU representative where relevant).
  - A description of the machine, including designation and serial number. The serial number on the document must be the same as that marked on the machine.
  - Name and address of the person in the EU who can be contacted to compile the technical file about the safety of the machine if requested to do so by a suitable EU authority.
  - Depending on the conformity assessment procedure chosen by the manufacturer, either one of the following:
    - the name, address and identification number of the notified body which carried out the EC type-examination and the number of the EC type-examination certificate;
- OR
- the name, address and identification number of the notified body which approved the full quality assurance system;
- OR
- a reference to the harmonised standard EN 280, if the self-assessment procedure has been used;

---

<sup>2</sup> The Directives' references may differ from those listed here depending on the MEWPs date of manufacturing.



- Where appropriate, the reference to other technical standards and specifications used;
- The conformity assessment procedure followed for noise emissions (e.g. Annex VI Procedure 1).
- The measured sound power level.
- The guaranteed sound power level.
- The date and place of the declaration
- Identity and signature of the person making the declaration.

Example of EC Declaration of Conformity

<b>ANY PLATFORMS LTD</b>		<i>EC DECLARATION OF CONFORMITY</i>	
Manufacturer	Any Platforms		
Address	123 Some Street Any Town Any Country		
Technical File:	Any Platforms 123 Some Street Any Town Any Country in E.U		
Contact:	A European	Position:	Engineer
Machine Type:	Mobile Elevating Work Platform		
Model Type:	Sample		
Serial Number:	00XX000001		
Notified Body:	Some Notified Body Ltd		
EC Number:	0XYZ		
Address	123 Any Street Some Town Anywhere in E.U		
Certificate Number:	<u>0101010101</u>		
Reference Standards:	EN12100-1 & 2:2003 + A1:2009 EN280:2001 + A2:2009		
Any Platforms hereby declare that the above mentioned machine conforms with the requirements of:			
2006/42/EC	Machinery		
2004/108/EC	EMC Directive		
2000/14/EC	Outdoor Noise		
2005/88/EC	Amending 2000/14/EC		
Signature:	_____	Date:	_____
Name:	_____	Position:	_____
		Place:	_____
Remark:			
Any modification to the above described machine violates the validity of this declaration This declaration conforms with the requirements of annex II-A of the council directive 2006/42/EC			



## 5. Instructions

Instructions (operator's handbook/manual) on the safe use of the MEWP are a requirement of EU law and must accompany each machine. The basic requirements are:

- They must be in the language of the member state where the machine is placed on the market or put into service.
- They must be either "Original instructions" or a "Translation of the original instructions", in which case the translation must be accompanied by the original instructions.
- The words "Original instructions" must appear on the language version(s) verified by the manufacturer or his authorised representative. Where no "Original instructions" exist and translations have been provided the translations must bear the words "Translation of the original instructions".
- The instructions must include the name and address of the manufacturer.
- The instructions must include a repeat of the machine markings, except for the serial number.
- The instructions must include a repeat of the main items of the Declaration of Conformity.
- The instructions must contain measurement results for noise and vibration levels at the operator position for this type of machine.

## 6. Engine exhaust emission

All diesel engines from 18 to 560 kW installed in MEWPs must comply with European Directive 97/68/EC (as amended) <sup>3</sup> when **the engine** is placed on the EU market for the first time<sup>4</sup> after the Directive came into force.

Compliant **engines** can be checked as follows:

- The engine shall have a visible data plate with an EC Type Approval Number, which gives information about compliance with regard to date of placing on the EU market.
- Engines under the flexibility scheme shall have an additional marking "Engine placed on the market under the flexibility scheme"
- The machine will also have additional markings giving details of the flexibility scheme applied.

---

<sup>3</sup> Repealed as of 01 January 2017, when new Regulation (EU) 2016/1628 begins to apply

<sup>4</sup> For the definition of placing on the market, see Blue Guide 2016 paragraph 2.3



Engine power

This plate is compliant

Type approval number

The EU directive

Emissions test method

e11\*97/68DA\*2004/26XX\*0003\*00

The critical letter to determine whether a machine has a compliant engine

## 7. Noise Emissions

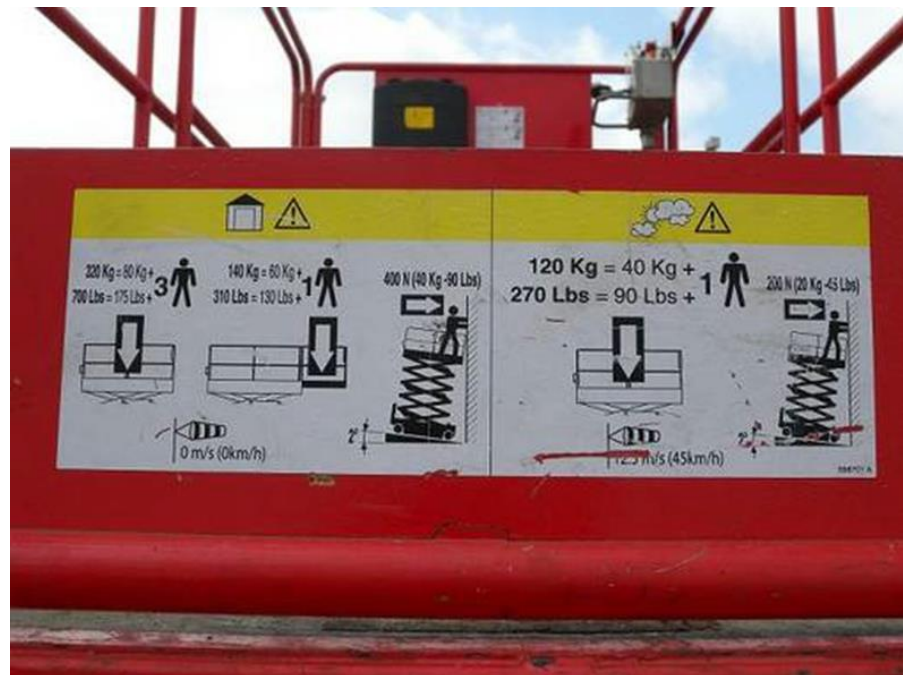
All mobile elevating work platforms with internal combustion engine must be marked with their guaranteed sound power level, like in the example:



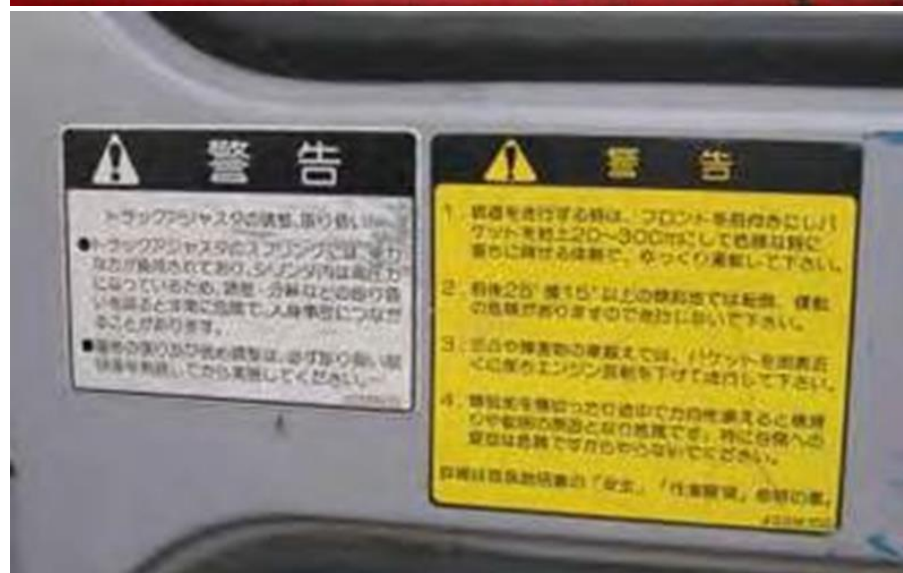
### 8. Warnings and decals

Information and warnings on the MEWP must be in pictograms or in a language of the Community for the country where the machine is placed on the market or put into service.

Example of compliant decal (Image supplied as example of pictorial decal)



NON compliant decal (the text is not in a EU language)



If language text decals are used the responsibility to replace these, if the machine changes countries after placement on the market, resides with the MEWP Owner.