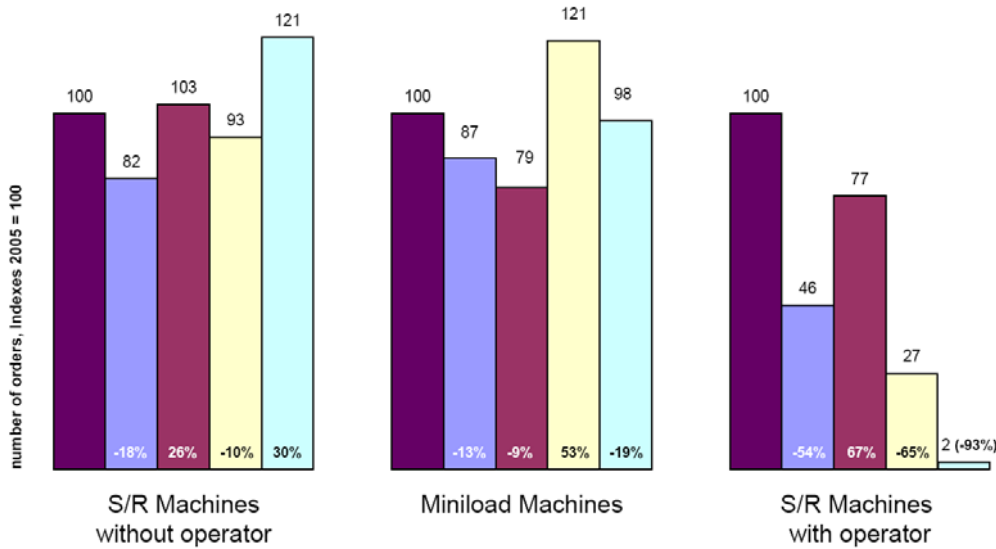




## FEM business trend report

### Statistics for S/R Machines Results - Total (Indexes)



#### Technical Secretary VDMA

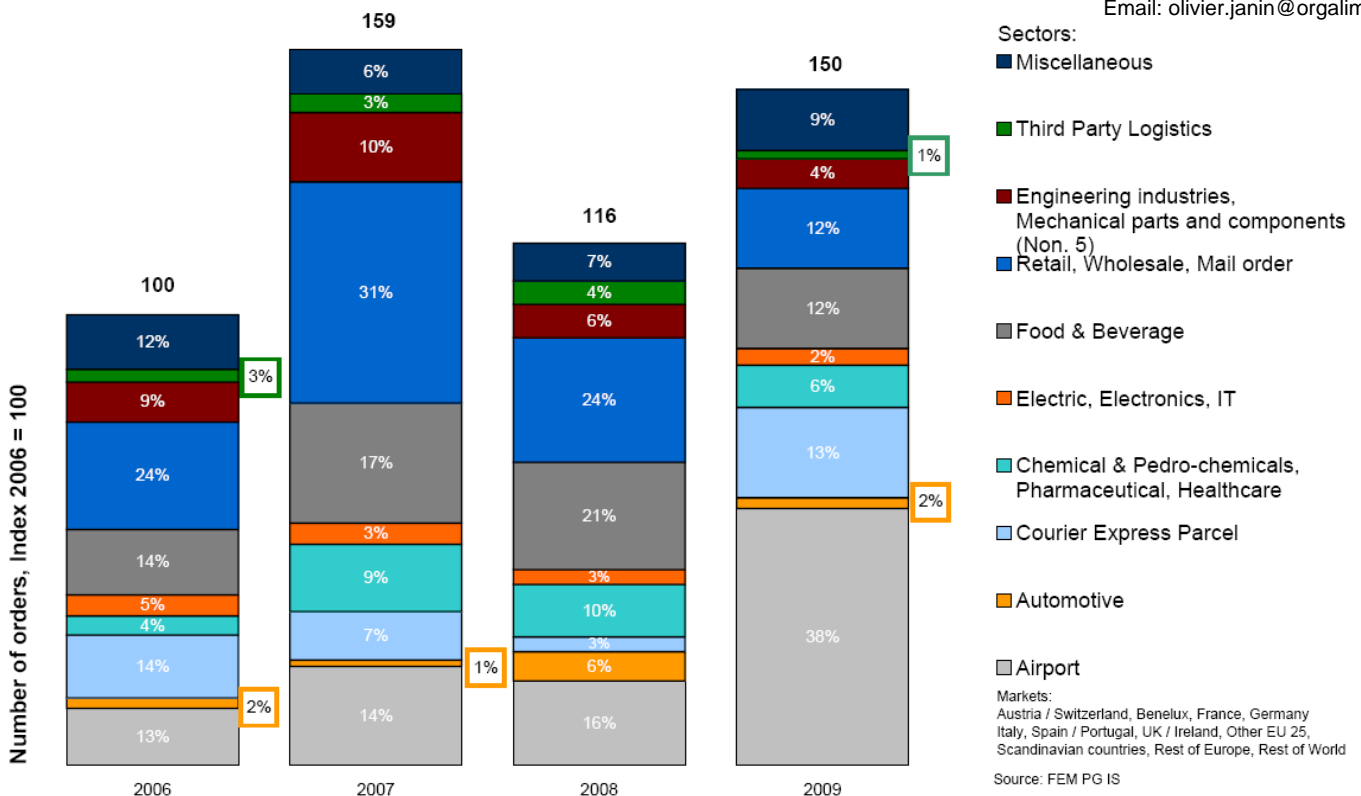
Karl Rottnick  
Lyoner Strasse 18  
60528 FRANKFURT/Main  
Germany  
Tel +49 69 66 03 15 09  
Fax +49 69 66 03 25 09  
Email: karl.rottnick@vdma.org

#### General Secretary FEM

Olivier Janin  
Diamant Building  
Boulevard A. Reyers 80  
B-1030 Brussels

Tel +32 2 706 8261  
Fax +32 2 706 8253  
Email: olivier.janin@orgalime.org

Source: FEM PG IS



#### Sectors:

- Miscellaneous
- Third Party Logistics
- Engineering industries, Mechanical parts and components (Non. 5)
- Retail, Wholesale, Mail order
- Food & Beverage
- Electric, Electronics, IT
- Chemical & Petro-chemicals, Pharmaceutical, Healthcare
- Courier Express Parcel
- Automotive
- Airport

Markets:  
Austria / Switzerland, Benelux, France, Germany  
Italy, Spain / Portugal, UK / Ireland, Other EU 25,  
Scandinavian countries, Rest of Europe, Rest of World

Source: FEM PG IS

In 2008 the economic growth had already been influenced by the financial market crisis. The international market for intralogistic systems is confronted with a strong economic slump. Within the period of one year the incoming orders of the materials handling sector have been decreased by more than 50 %.

However, the overall encouraging production figures in 2008 can not alter the fact that the storage equipment industry has also been hit very hard by the worldwide financial and economic crisis.

In the middle of 2008 a prolonged slump in order intakes was noticed. Comprehensive analyses indicate that in the middle of 2009 the crises reached its lowest level, but reliable forecasts can not yet be made.

With regard to the present year 2010 most countries have overcome the recession. Since the middle of 2009 the incoming orders have increased again.