



Presidents Forum

主席论坛



16th September 2016 , Tokyo, Japan 日本 东京

Presentation by Akira Shiki
President of JIVA
发言人 JIVA主席 志歧 彰

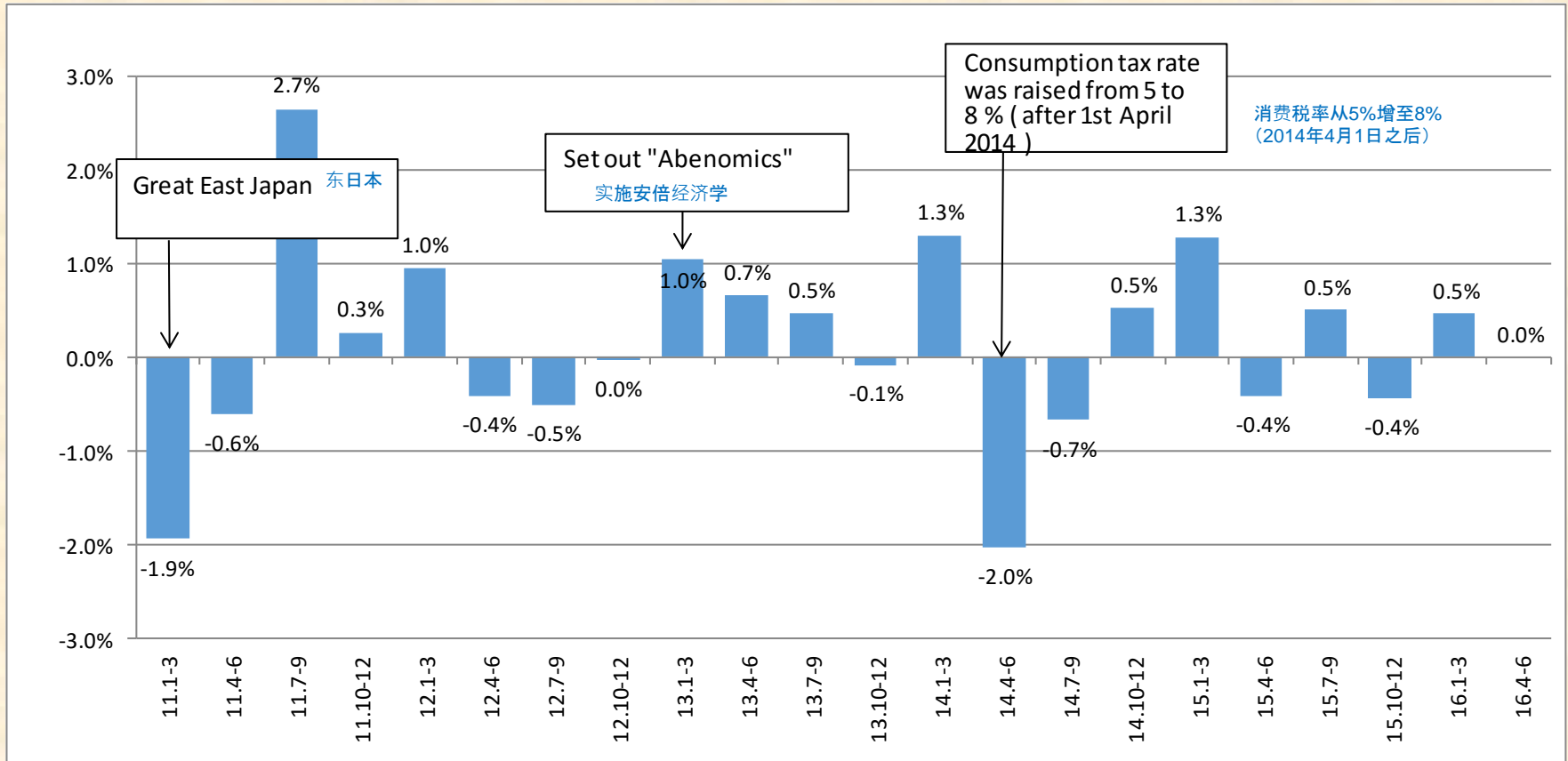
Today's agenda 今天的目录

1. Trend of Japanese economy 日本经济的走势
2. Current and future lift trucks market in Japan
目前以及未来的日本叉车市场

Trend of Real GDP 实际GDP的走势

(seasonally adjusted) 按季节调整

(Changes from the previous quarter) 与上季度比较发生的变化



Source from Cabinet Office

消息来源于内阁府

Breakdowns for Real GDP

实际GDP的分解

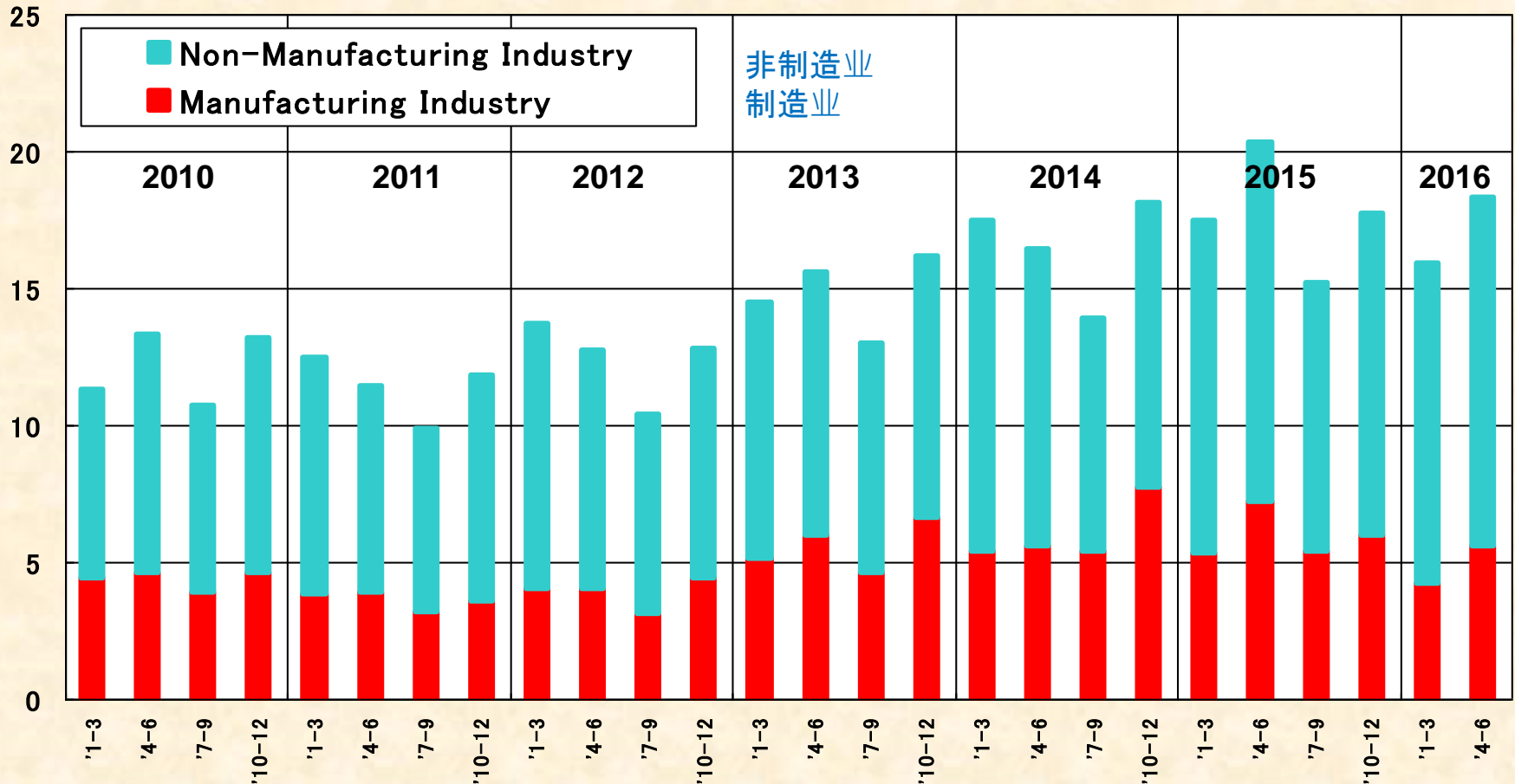
	2015 1-3	2015 4-6	2015 7-9	2015 10-12	2016 1-3	2016 4-6
GDP	1.3	-0.4	0.5	-0.4	0.5	0.0
Private Consumption 个人消费	0.2	-0.7	0.5	-0.8	0.7	0.2
Private Residential Investment 个人住宅投资	2.1	1.7	1.1	-0.5	-0.1	5.0
Private Non-Resi. Investment 个人非住宅投资	3.2	-0.9	0.7	1.2	-0.7	-0.4
Government Consumption 政府消费	0.3	0.3	0.2	0.8	0.9	0.2
Public Investment 公共公投资	-2.3	1.2	-1.9	-3.3	0.1	2.3

Current Profits in Corporations

Ministry of Finance, Financial statements statistics

企业一般盈利 财务省 财务分析报告

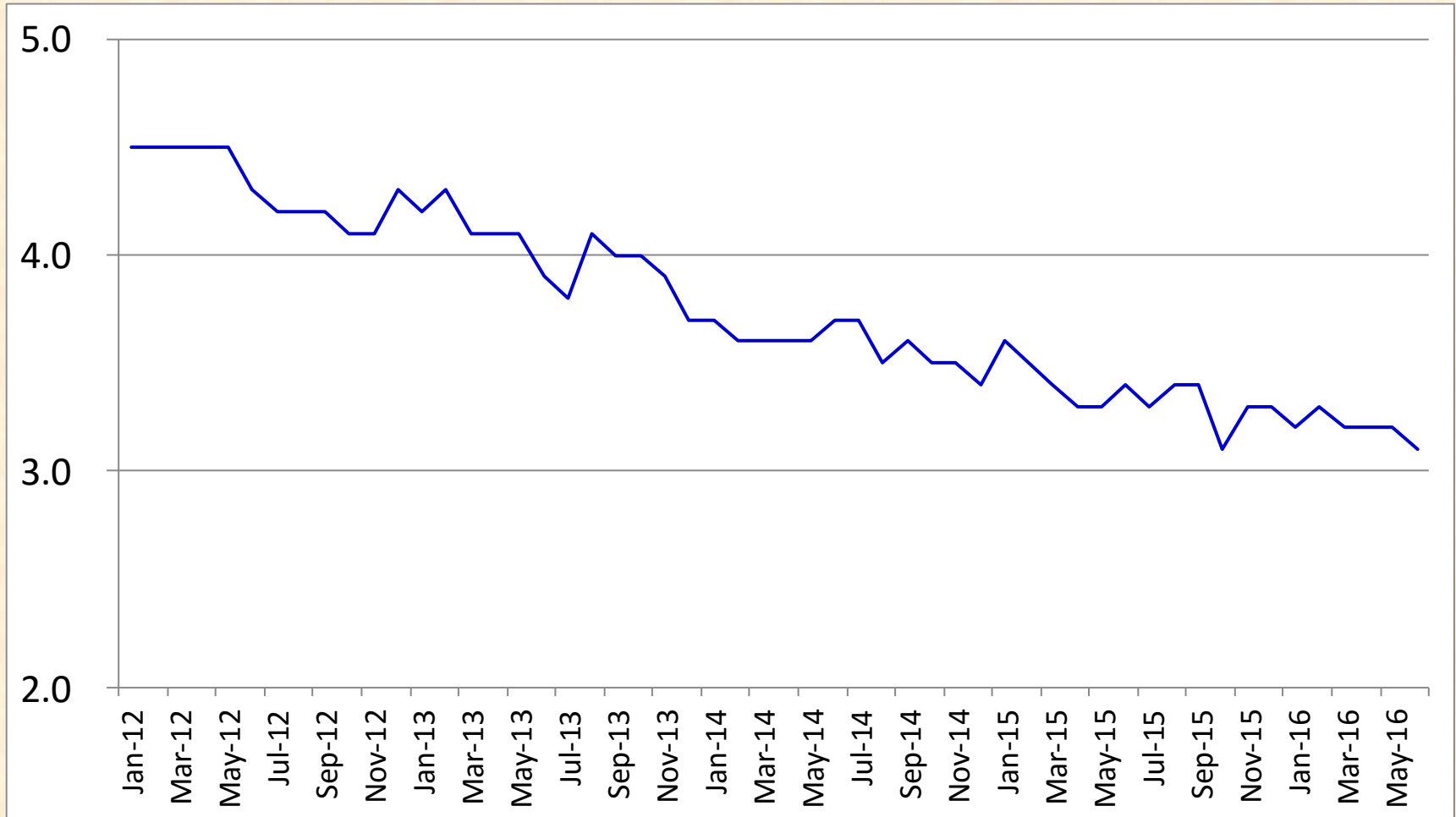
(trillion yen) 万亿



Source from Ministry of Finance
消息来源于财务省

Unemployment Rate 失业率

(%)



Today's agenda 今天的目录

1. Trend of Japanese economy 日本经济走势

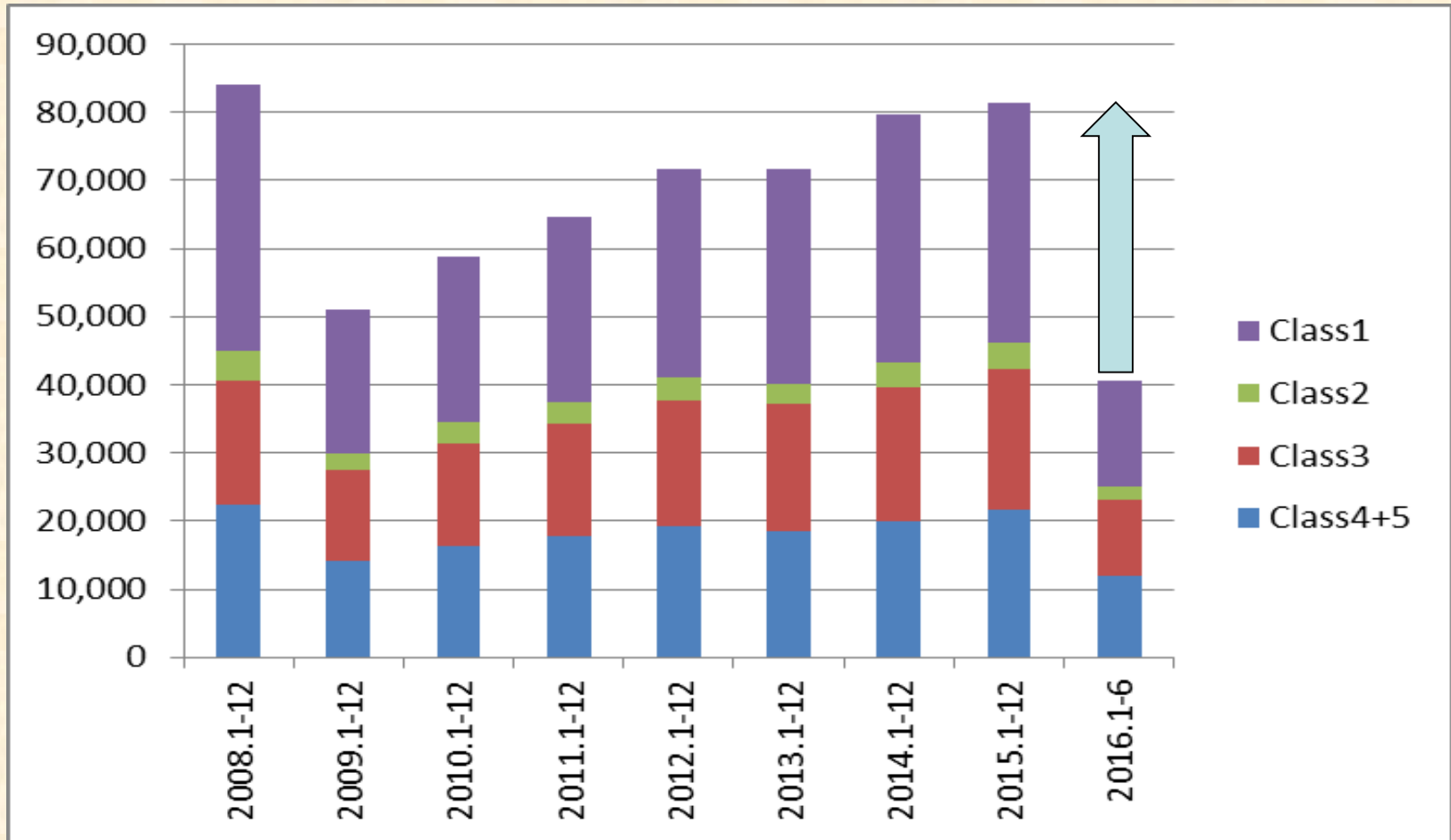
2. Current and future lift trucks market in Japan

目前和未来的日本叉车市场

2016 Domestic demand in Japan is expected to almost flat

2016年日本国内需求量预计持平

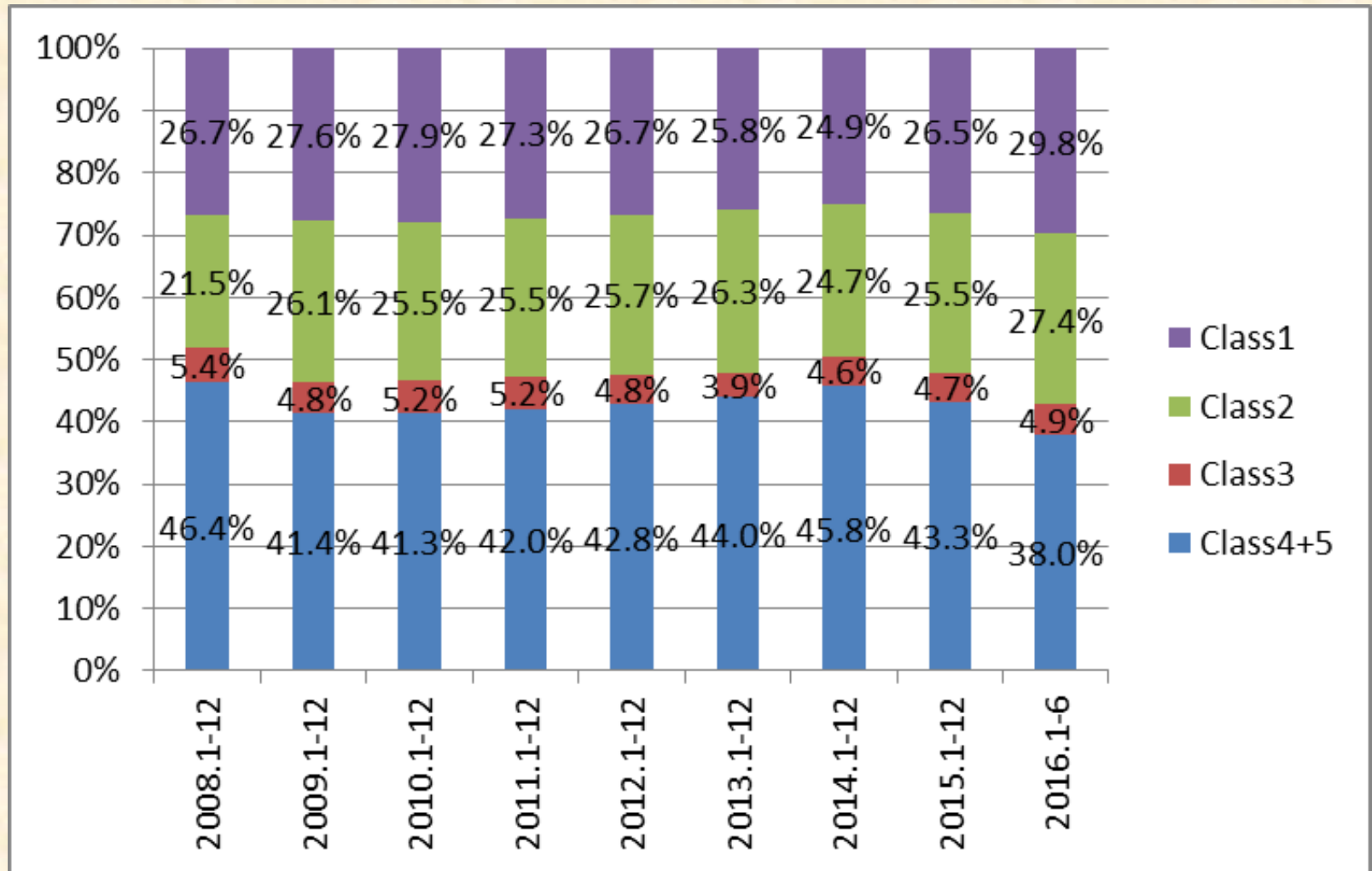
(Unit) 辆



(Source from WITS shipment)
消息来源于WITS出货量

Trend of Truck Class in Japan

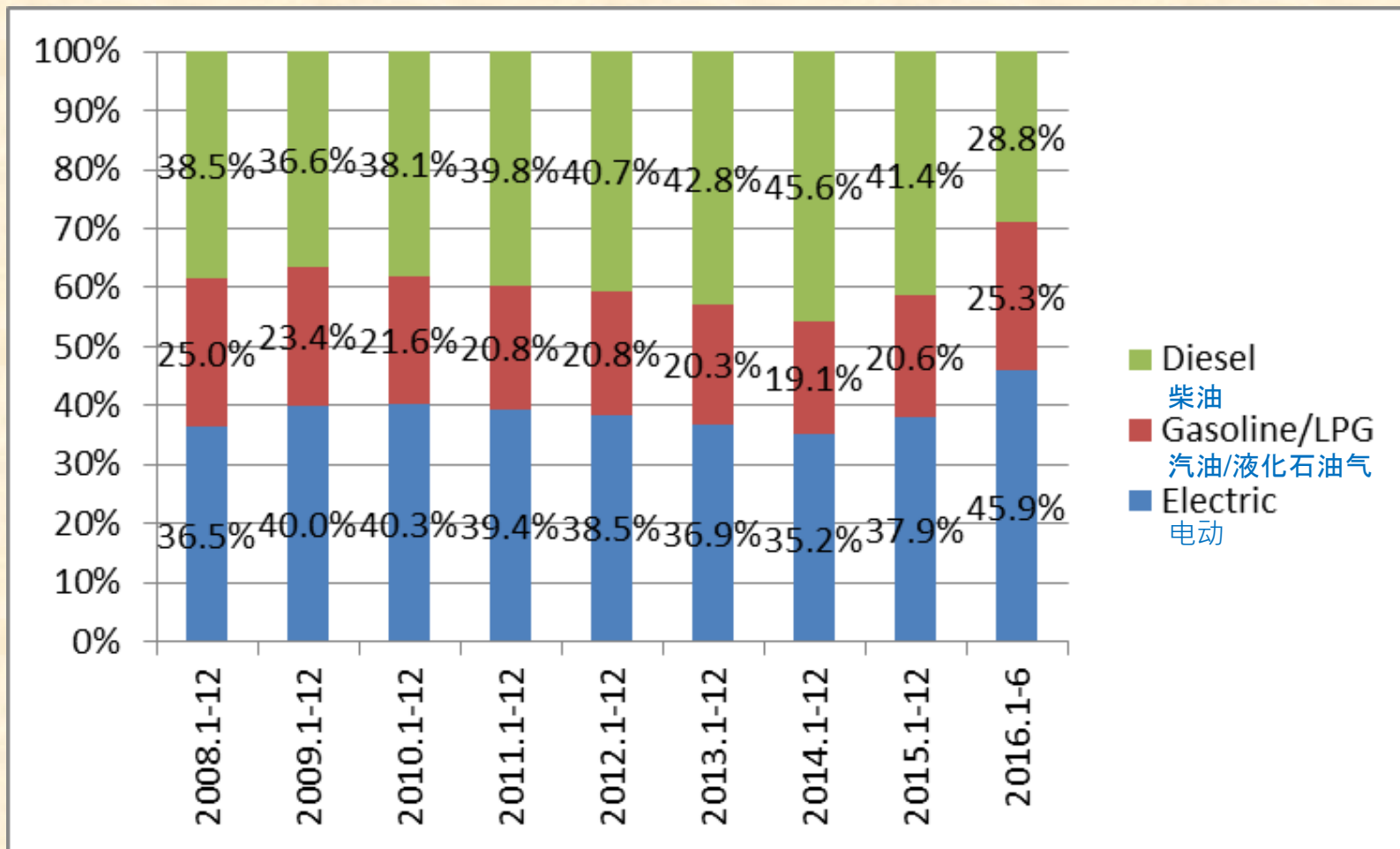
日本车辆类别的走势



(Source from WITS shipment)
消息来源于WITS出货量

Trend of Power Type in CB Trucks

内燃车动力的走势

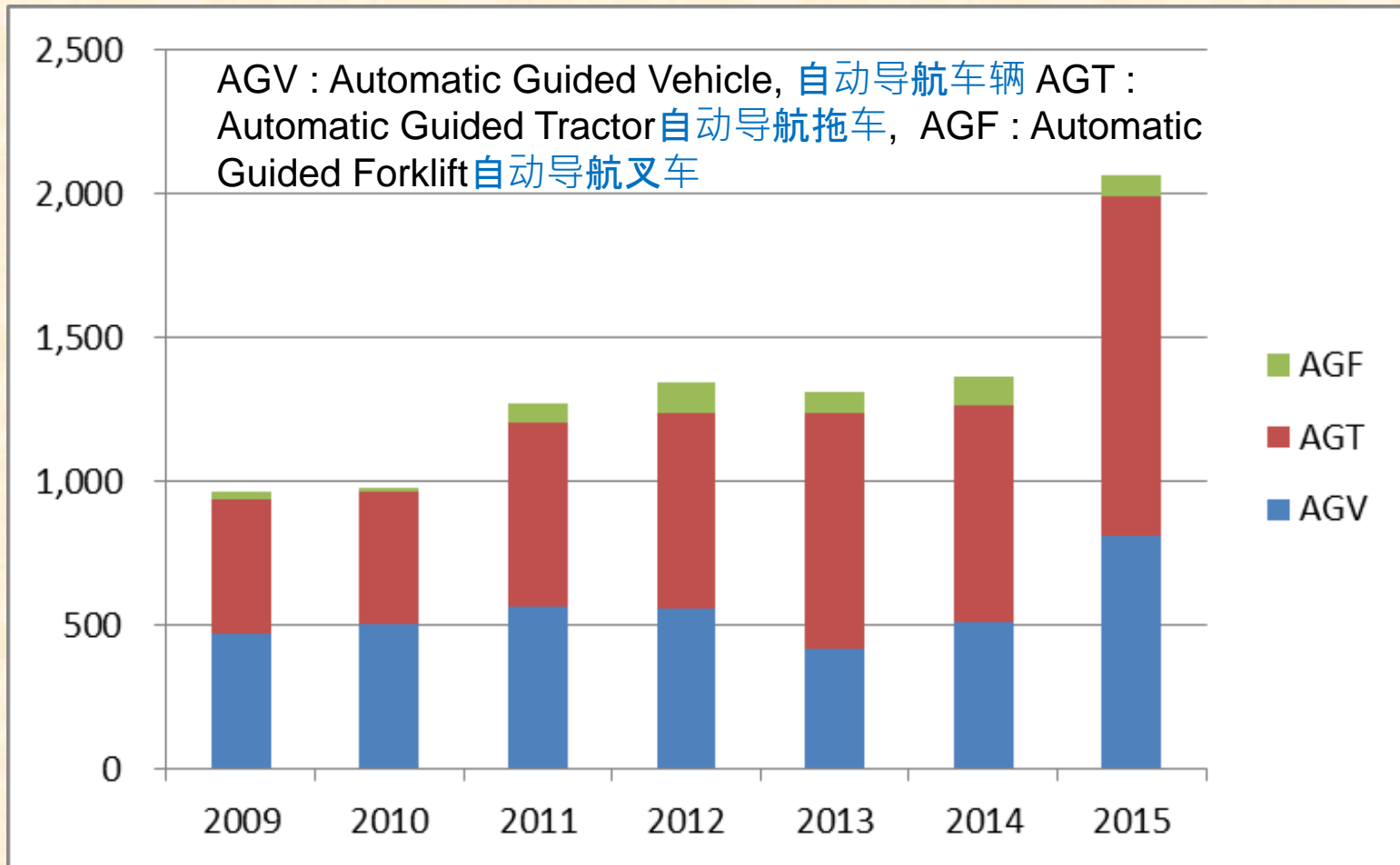


(Source from JIVA shipment)
消息来源于JIVA出货量

Trend of AGVS market in Japan

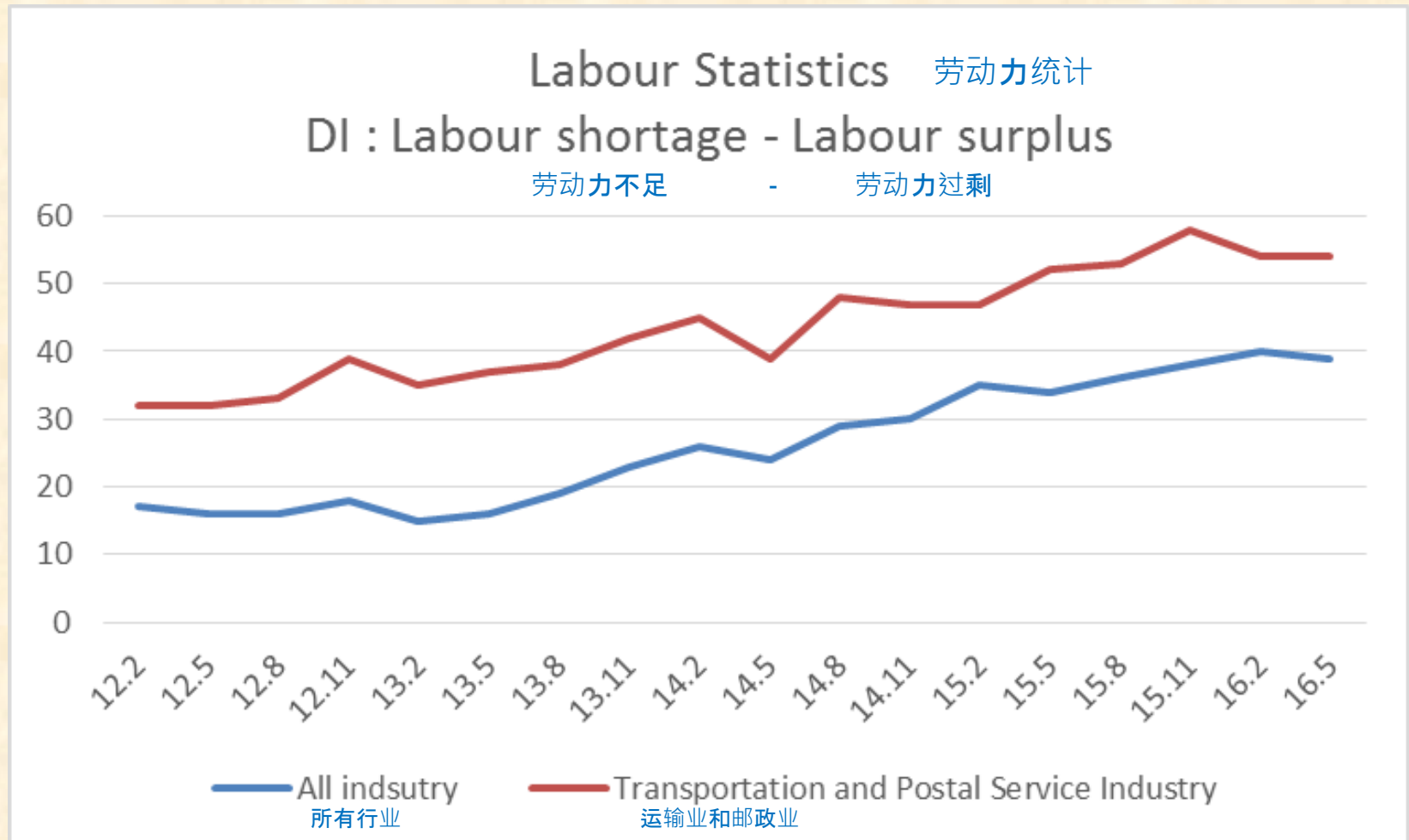
日本无人驾驶车市场走向

(Unit) 辆



Labour shortage in Transportation Industry

运输业劳动力不足



Logis Tech Tokyo 2016

东京国际物流综合展2016

Logis-Tech Tokyo
2016

Japan's Largest Exhibition for Material Handling & Logistics

日本最大的物料搬运和物流相关的展览

Date: September 13(Tue) – 16(Fri) , 2016

日期:2016年9月13日(周二)-16日(周五)

Venue: Tokyo Big Sight (Tokyo International Exhibition Center)

地点:日本东京国际展示中心

Scale: 456 companies / 2,077 booths

规模:456家公司/2077个展位

Number of entries (Planned): 55,000 professionals

入场人数(计划):55000专业人士

Mutual cooperation with CeMAT and MHI

与CeMAT和MHI的相互合作

Thank you for your attention

感谢您的倾听！